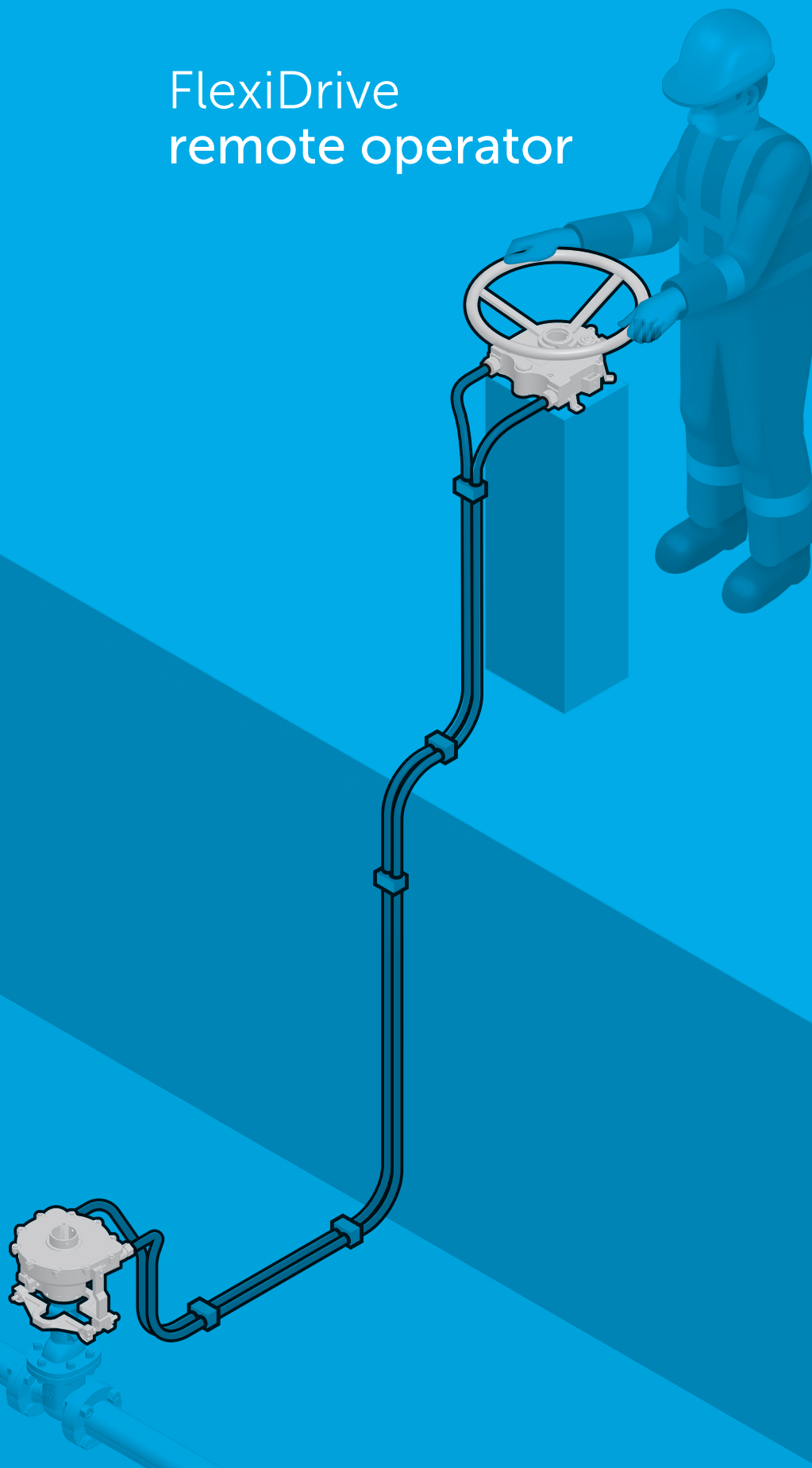




# FlexiDrive remote operator

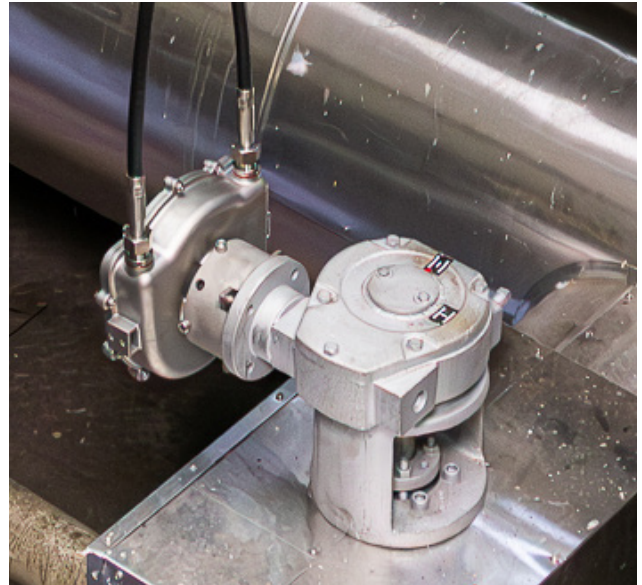


# Safe operation of your inaccessible, hard-to-reach manual valves

With the FlexiDrive remote operator you can safely work valves that are above, below, immersed, in tight confined spaces or located in potentially dangerous environments.



An operator station is placed up to 30 metres away from your valve...



A valve station is fitted to a valve via a bespoke anchor and adaptor...



Torque is transmitted through a cable to drive your valve.

## Ensure safe operation of hard-to-reach valves

Your manual valves are sometimes difficult to reach or positioned in inaccessible, hazardous locations or with confined entry points. Direct access could prove dangerous. Using FlexiDrive, you can now operate your valve from an accessible location, without compromising safety.

## A simple and effective method of valve operation

You may have to climb up, under and around pipework. Alternatively, scaffolding may be required, which can take time to organise and install. A scissor lift could be used, but these have costly hire charges. Ladders are another option, but these carry their own safety risks through trips and falls. FlexiDrive simplifies your valve operations by removing the need for any of the above.

## Reduce costs by avoiding dedicated actuators

To operate valves in the most extreme, challenging locations, a dedicated actuator may seem like the only option. However, by simply installing a FlexiDrive, manual valves can be operated efficiently and effectively. This comes at a fraction of the cost of installing and maintaining permanent dedicated actuators and the required infrastructure.

## Avoid unsafe situations

By positioning the operator station away from the valve, you keep the operator away from unsafe positions and out of hazardous situations such as chemical leaks, steam, vibration or radiation.

*FlexiDrive gets the operator out of a potentially dangerous environment and allows the valve to be operated in a safe and ergonomic position.*





# FlexiDrive models

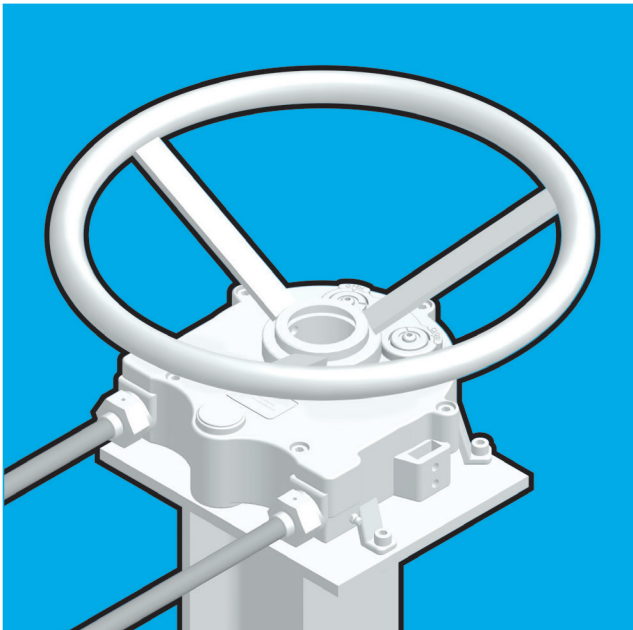
FlexiDrive is adaptable to almost any handwheel or lever operated valve. Casted in 316 stainless steel, it is suitable for the most extreme operating environments. As a fully mechanical system, it requires no specific infrastructure and only minimal maintenance.



*The operator station can be mounted onto existing railings or bespoke fixtures. Placing several operator stations close to each other allows the efficient operation of several valves from one central location.*

## Operator station

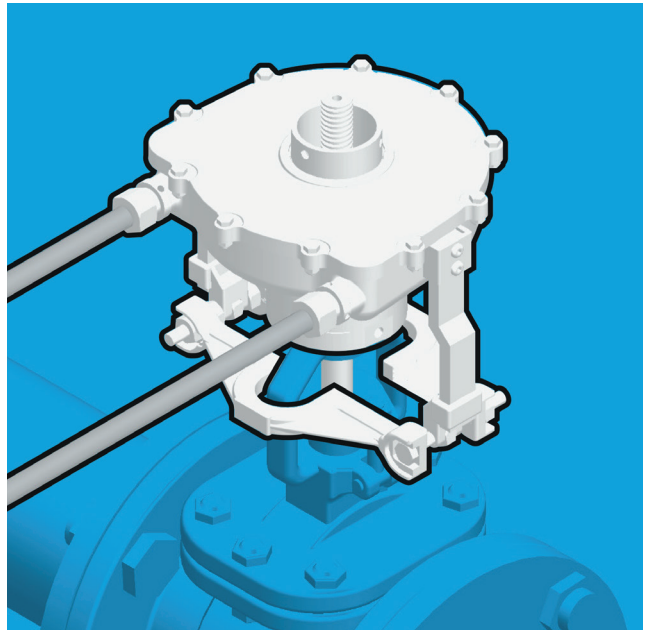
Depending on the maximum breakout torque of your valve, there are different options available to you. FlexiDrive can accommodate up to 540° of bend in the cable run and your valve can be operated from up to 30 metres away. The operator station can be mounted to a wall, rail or pedestal for operational convenience.



Operator station

## Valve station

The valve station is fitted directly to the valve using a purpose designed mounting kit. It can be optionally supplied with a handwheel or lever for local operation. A submersible valve station for installation on valves below water, or in potentially flooded areas, is optionally available.



Valve station



Position indicator

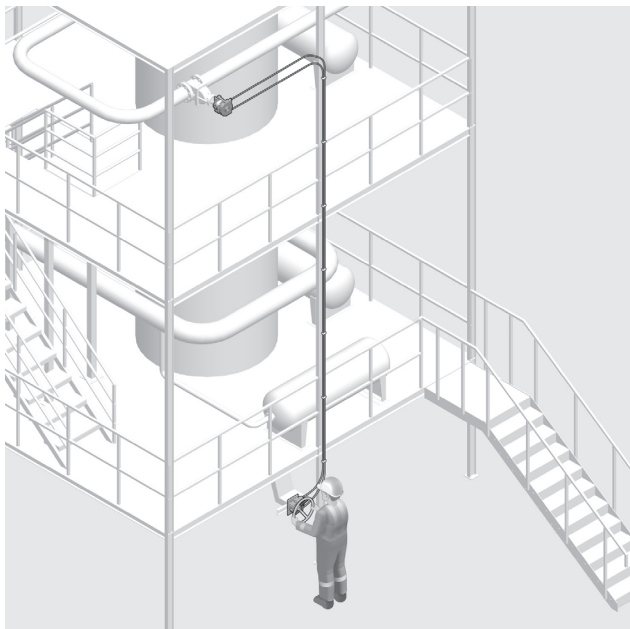
## Position indicator

There is a visual position indicator at the operator station, so you can quickly and easily determine the position of your valve.

# Applications

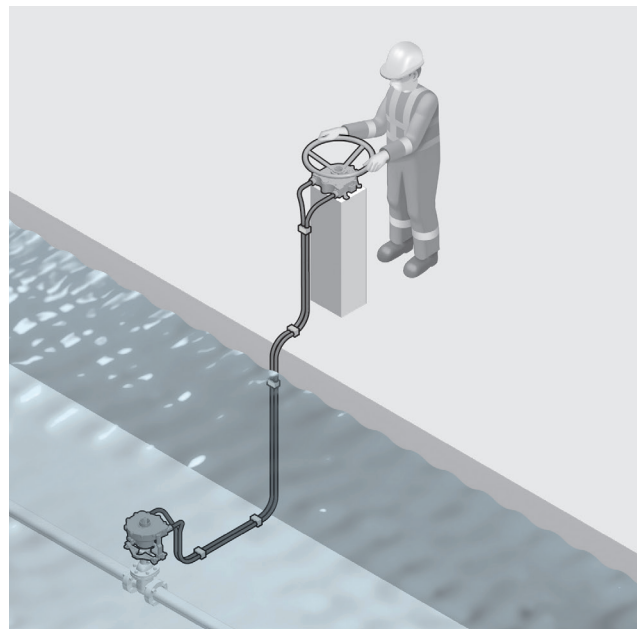
## Valves in remote or hard to reach places

- You can position the operator station up to 30 metres away from the valve at your preferred location.
- This can be on the same level, directly above or under, adjacent or parallel as the cable can facilitate bends.
- The cable can run alongside walls, pipework or any of your existing plant infrastructure.
- Can also be used for confined entry points.



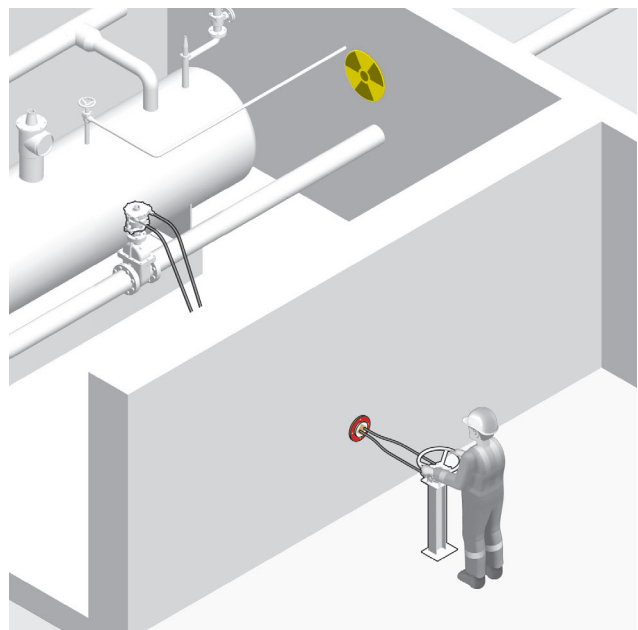
## Valves in submersed pits

- With the optional submersible FlexiDrive valve station you can operate your valves from ground level, without the need to enter a flooded pit or any other body of fluid to gain access to your valve.
- The submersible valve station is IP68 tested and rated. FlexiDrive can be used to protect compartments liable to flooding.



## Valves in hazardous locations

- FlexiDrive can be passed around and through walls and floors to reach your valve using bulkhead seals.
- Low temperature and heat & flame protection options are available.





# Experience

FlexiDrive remote operator is a cost effective, safe solution to your hard-to-reach manual valve operations. It is used globally by major end users to protect their operators and to maximise efficiency during valve operations.



Sofis is the leading global smart valve operation solutions provider and specialist, ensuring safe and sustainable manual valve operations. With our integrated solutions we help customers optimize valve operation, protecting people, property and the planet. Renowned for our smart solutions and our expertise, we have been serving industries with critical valve operation processes since 1985.

---

## Contact

[www.sofisglobal.com/contact](http://www.sofisglobal.com/contact)  
[marketing@sofisglobal.com](mailto:marketing@sofisglobal.com)  
+31 172 471 339

## Locations

Alphen aan den Rijn, Netherlands  
+31 172 471 339

Maldon, United Kingdom  
+44 1621 220 001

Stockstadt, Germany  
+49 6027 405 12-0

Houston, USA  
+1 346 352 2140

Vadodara, India  
+91 9879 559 345

Bengaluru, India  
+91 80 6747 5300



No accidents.  
No injuries.  
No downtime.  
No spills.  
No loss.

